

1.5" letter height
Braille typical, not translated

| DESIGN PROPOSAL | MATERIAL/COLOR | <p>This is your proof indicating design, size and placement (if applicable). Actual color will be from your selection, as appearance on this proof may vary.</p> <p>Please review carefully for accuracy and return with your signed approval or indicated changes. Revisions made after this signed approval may result in additional costs.</p> <p><i>Production will not begin without your signed approval.</i></p> <p style="text-align: right;">Page 2.0</p> |
|--|--|--|
| <p>Item: A. Unit Number signs Quantity: See Schedule Size: See above, .06" rad corners Font: As determined on Page 1.0 Installation: Double sided foam tape and contractors silicone</p> | <p>Base: ADA substrate Tactile: ADA applique Braille: Clear, CA ADA compliant beads Other: Color as determined on Page 1.0</p> | |

| Floor | ★1 | 2 | 3 | 4 | R |
|------------------|-----|-----------|-----------|-----------|-----|
| | --- | 201 | 301 | 401 | --- |
| | | 202 | 302 | 402 | |
| | | 203 | 303 | 403 | |
| | | 204 | 304 | 404 | |
| | | 205 | 305 | 405 | |
| | | 206 | 306 | 406 | |
| | | 207 | 307 | 407 | |
| | | 208 | 308 | 408 | |
| | | 209 | 309 | 409 | |
| | | 210 | 310 | 410 | |
| | | 211 | 311 | 411 | |
| | | 212 | 312 | 412 | |
| | | 213 | 313 | 413 | |
| | | 214 | 314 | 414 | |
| | | 215 | 315 | 415 | |
| | | 216 | 316 | 416 | |
| | | 217 | 317 | --- | |
| | | 218 | 318 | 418 | |
| | | 219 | 319 | 419 | |
| | | 220 | 320 | 420 | |
| | | 221 | 321 | 421 | |
| | | 222 | 322 | 422 | |
| | | 223 | 323 | 423 | |
| | | 224 | 324 | 424 | |
| | | 225 | 325 | 425 | |
| | | 226 | 326 | 426 | |
| | | 227 | 327 | 427 | |
| | | 228 | 328 | 428 | |
| | | 229 | 329 | 429 | |
| | | 230 | 330 | 430 | |
| | | 231 | 331 | 431 | |
| | | 232 | 332 | 432 | |
| | | 233 | 333 | 433 | |
| | | 234 | 334 | 434 | |
| | | 235 | 335 | 435 | |
| | | 236 | 336 | 436 | |
| | | 237 | 337 | 437 | |
| Subtotals | --- | 37 | 37 | 36 | --- |

=110



Phone: 562.803.1988

Fax: 562.803.5298

LASignsbanners.com

11902 Woodruff Ave.
Downey, Ca 90241

LIC. # 930147

Phone: 562.803.1988

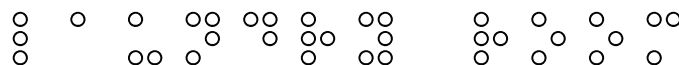
Fax: 562.803.5298

LASignsbanners.com

11902 Woodruff Ave.
Downey, Ca 90241

L.I.C. # 930147

ELEVATOR 1
EQUIPMENT



.75" letter height

Braille typical, not translated

| DESIGN PROPOSAL | MATERIAL/COLOR | |
|--|---|--|
| <p>Item: B. Room Names signs Quantity: See Schedule Size: See above, .06" rad. corners Font: As determined on Page 1.0 Installation: Double sided foam tape and contractors silicone</p> | <p>Base: ADA substrate Tactile: ADA applique Braille: Clear, CA ADA compliant beads Other: Color as determined on Page 1.0</p> | <p>This is your proof indicating design, size and placement (if applicable). Actual color will be from your selection, as appearance on this proof may vary. Please review carefully for accuracy and return with your signed approval or indicated changes. Revisions made after this signed approval may result in additional costs. <i>Production will not begin without your signed approval.</i></p> <p style="text-align: right;">Page 3.0</p> |



Phone: 562.803.1988

Fax: 562.803.5298

LASignsbanners.com

11902 Woodruff Ave.
Downey, Ca 90241

LIC. # 930147

| Floor | ★1 | 2 | 3 | 4 | R |
|-------|---|--|--|--|--|
| | SUB ELECTRICAL ROOM ELECTRICAL ROOM MAINTENANCE STORAGE MAINTENANCE STORAGE STAIR 2 EXIT ONLY STAIR 3 EXIT ONLY STAIR 4 EXIT ONLY MATERIAL COLLECTION ROOM COMMUNITY ROOM STORAGE STORAGE STORAGE STORAGE BREAK ROOM TO PARKING TO PARKING TO LOBBY TO LOBBY RESIDENTIAL MAIL STAIR 1 ADMINISTRATIVE OFFICE MANAGERS OFFICE FITNESS OFFICE 1 OFFICE 1 OFFICE 2 OFFICE 3 COMMUNICATION ROOM | LAUNDRY MAINTENANCE MAINTENANCE STORAGE STORAGE COMMUNICATION CLOSET COMMUNICATION CLOSET COMMUNICATION CLOSET COMMUNICATION CLOSET TRASH CHUTE | LAUNDRY MAINTENANCE MAINTENANCE STORAGE STORAGE COMMUNICATION CLOSET COMMUNICATION CLOSET COMMUNICATION CLOSET COMMUNICATION CLOSET TRASH CHUTE | LAUNDRY MAINTENANCE MAINTENANCE STORAGE STORAGE COMMUNICATION CLOSET COMMUNICATION CLOSET COMMUNICATION CLOSET COMMUNICATION CLOSET TRASH CHUTE | ELEVATOR 1 EQUIPMENT ELEVATOR 2 EQUIPMENT |



1.5" height, 1/4" stroke
1.25" height, 1/4" stroke
5" height, 3/4" stroke
1.25" height, 1/4" stroke
1.25" height, 1/4" stroke
1.25" height, 1/4" stroke

| Floor | ★1 | 2 | 3 | 4 | R |
|---------|----|---|---|---|---|
| Stair 1 | X | X | X | X | |
| Stair 2 | X | X | X | X | X |
| Stair 3 | X | X | X | X | X |
| Stair 4 | X | X | X | X | X |

DESIGN PROPOSAL

Item: F.1 Stairwell sign combo, 1 of 2
Quantity: See Schedule
Size: See above; .06" rad. corners
Font: Arial Bold, Helv. Bold Cond.
Installation: Double sided foam tape and contractors silicone

MATERIAL/COLOR

Base: ADA substrate, 1/8" thick, beveled edges

Graphic: Adhesive vinyl

Braille: none

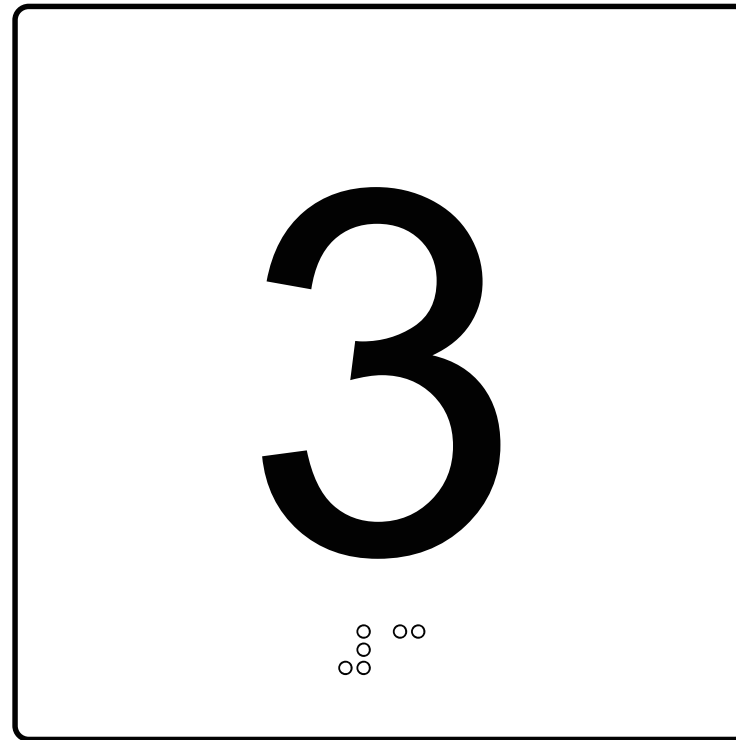
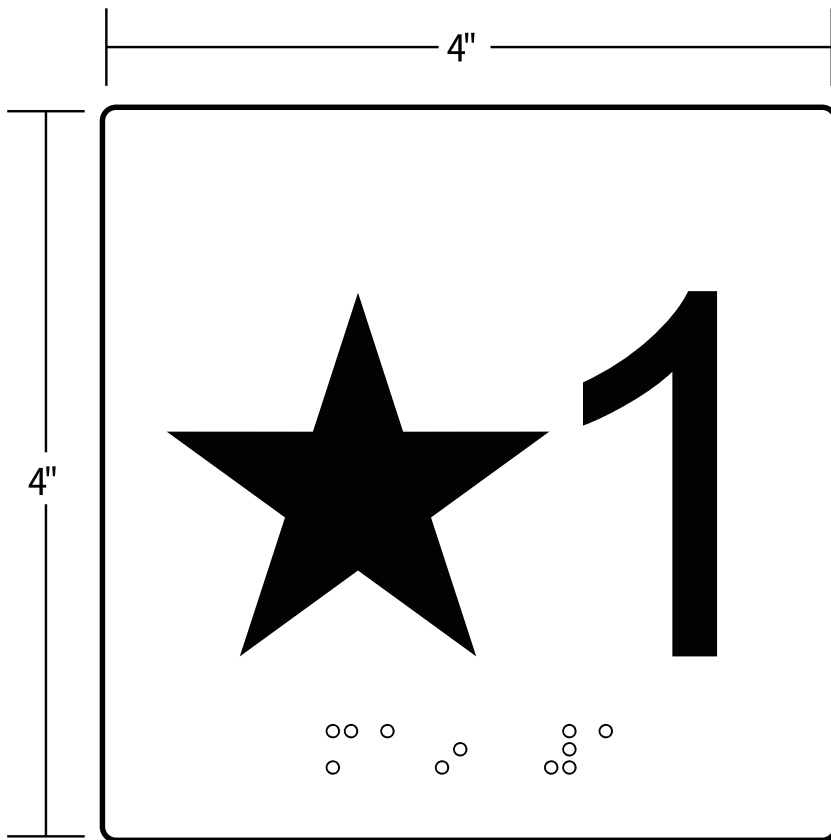
Color selection on Page 1.0

This is your proof indicating design, size and placement (if applicable). Actual color will be from your selection, as appearance on this proof may vary.

Please review carefully for accuracy and return with your signed approval or indicated changes. Revisions made after this signed approval may result in additional costs.

Production will not begin without your signed approval.

Page 5.0



2" number height

| DESIGN PROPOSAL | MATERIAL/COLOR | <p>This is your proof indicating design, size and placement (if applicable). Actual color will be from your selection, as appearance on this proof may vary.</p> <p>Please review carefully for accuracy and return with your signed approval or indicated changes. Revisions made after this signed approval may result in additional costs.</p> <p><i>Production will not begin without your signed approval.</i></p> |
|--|---|--|
| <p>Item: F.2, Stairwell Sign , Combo, 2 of 2</p> <p>Quantity: See Schedule</p> <p>Size: See above; .06" rad. corners</p> <p>Font: As determined on Page 1.0</p> <p>Installation: Double sided foam tape and contractors silicone</p> | <p>Base: ADA substrate, beveled edges</p> <p>Graphic: ADA applique</p> <p>Finish: Non-glare matte</p> <p>Braille: Clear, CA ADA compliant beads</p> <p>Note:</p> <p>Color selection on Page 1.0</p> | |

Each map unique to install location



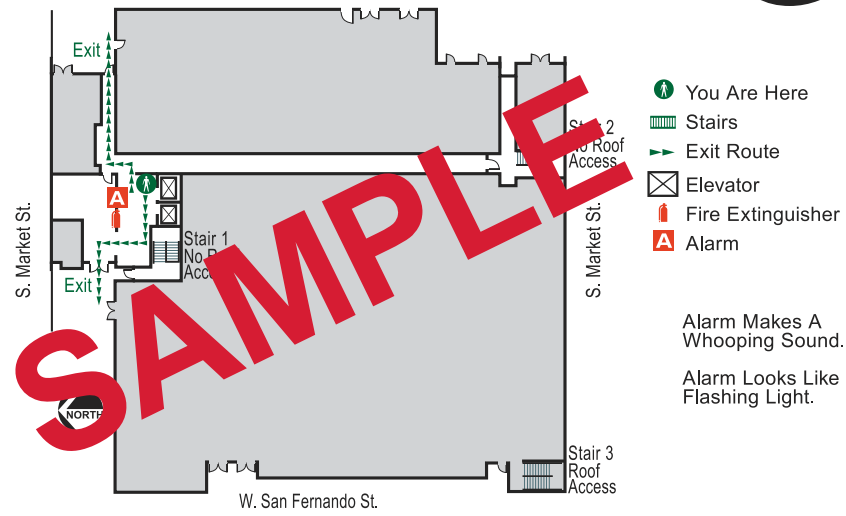
Phone: 562.803.1988
 Fax: 562.803.5298
 LASignsbanners.com
 11902 Woodruff Ave.
 Downey, Ca 90241
 LIC. # 930147

EVACUATION PLAN

200 S. Market St. • San Jose, CA 95113

W. San Carlitos St.

FLOOR
G



- You Are Here
- Stairs
- Exit Route
- Elevator
- Fire Extinguisher
- Alarm

Alarm Makes A Whooping Sound.
 Alarm Looks Like Flashing Light.

DIAL 911 FOR EMERGENCIES

**IN CASE OF FIRE OR EARTHQUAKE
 USE STAIRS FOR EXIT.
 DO NOT USE ELEVATOR.**

| Floor Level | ★1 | 2 | 3 | 4 | R |
|---------------|----|---|---|---|---|
| Stair 1 | X | X | X | X | |
| Stair 2 | X | X | X | X | X |
| Stair 3 | X | X | X | X | X |
| Stair 4 | X | X | X | X | X |
| Elevator 1 | X | X | X | X | |
| Elevator 2 | X | X | X | X | |
| Main Entrance | X | | | | |

12"

| DESIGN PROPOSAL | MATERIAL/COLOR |
|---|--|
| Item: G. Evacuation Signs Quantity: See schedule Size: See above, .06" rad. corners Font: As determined on Page 1.0 Installation: Double sided foam tape and contractors silicone | Base: Non-glare, 1/8" thick clear acrylic, beveled edges Graphics: Digitally printed to compliment chosen color scheme TBD Braille: None |

This is your proof indicating design, size and placement (if applicable). Actual color will be from your selection, as appearance on this proof may vary.

Please review carefully for accuracy and return with your signed approval or indicated changes. Revisions made after this signed approval may result in additional costs.

Production will not begin without your signed approval.

98"

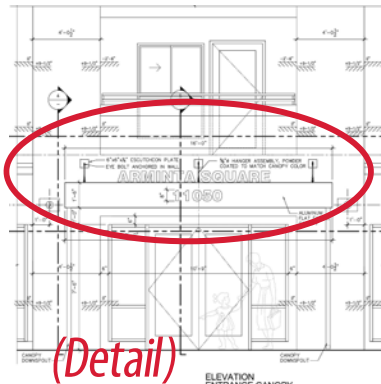
19"

ARMINTA SQUARE 11050

Font: 8" Arial Bold
Material: Cast Aluminum
Please advise on Finish Color

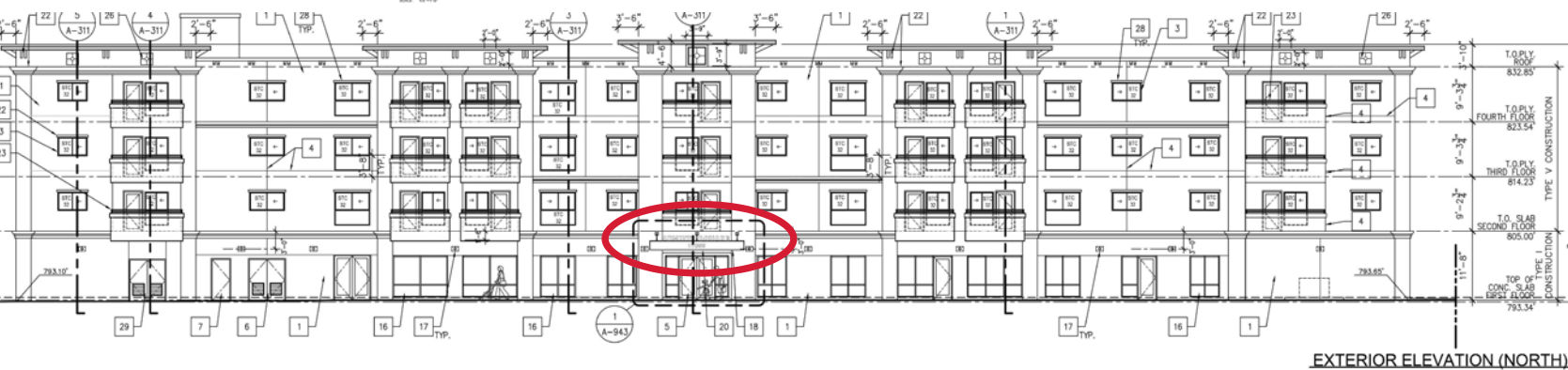


Phone: 562.803.1988
Fax: 562.803.5298
LASignsbanners.com
11902 Woodruff Ave.
Downey, Ca 90241
LIC. # 930147



Please confirm installation location

(Detail)



EXTERIOR ELEVATION (NORTH)
SCALE: 3/32" = 1'-0"

DESIGN PROPOSAL

Item: I.1 Address number signs

Quantity: TBD

Size: TBD

Font: As indicated

Installation:

This is your proof indicating design, size and placement (if applicable). Actual color will be from your selection, as appearance on this proof may vary.

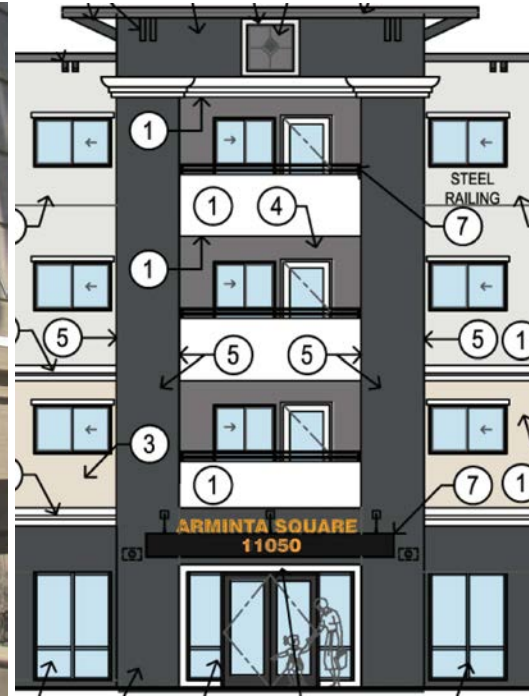
Please review carefully for accuracy and return with your signed approval or indicated changes. Revisions made after this signed approval may result in additional costs.

Production will not begin without your signed approval.

Illuminated

Bottom Rail-Mounted

Architectural Drawing



Phone: 562.803.1988
 Fax: 562.803.5298
 LASignsbanners.com
 11902 Woodruff Ave.
 Downey, Ca 90241
 LIC. # 930147

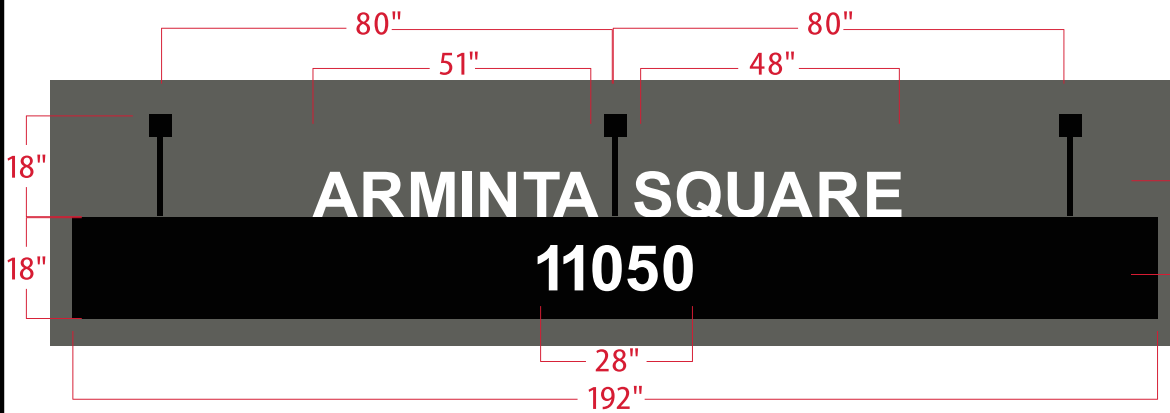
DESIGN PROPOSAL

Item: Address Number + Property Name sign examples

This is your proof indicating design, size and placement (if applicable). Actual color will be from your selection, as appearance on this proof may vary.

Please review carefully for accuracy and return with your signed approval or indicated changes. Revisions made after this signed approval may result in additional costs.

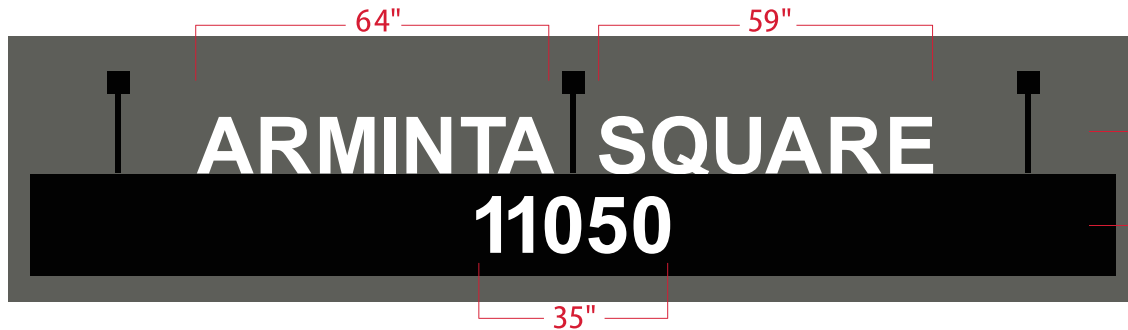
Production will not begin without your signed approval.



Bottom Rail Mounted

Option A
Font: 8" Arial Bold

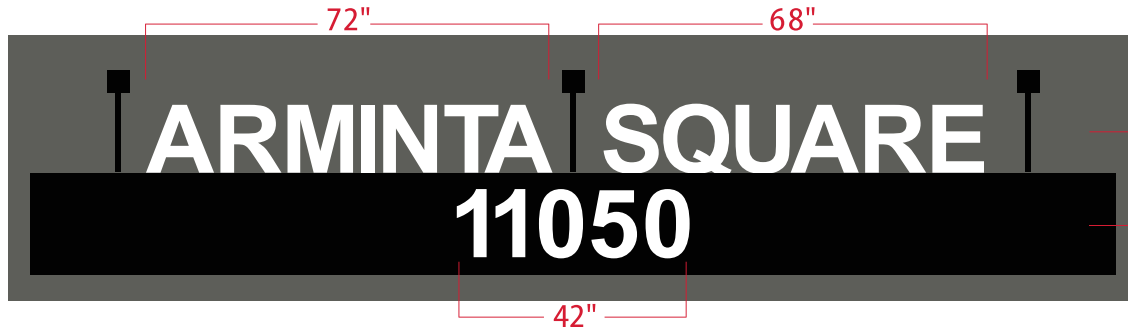
Illuminated



Bottom Rail Mounted

Option B
Font: 10" Arial Bold

Illuminated



Bottom Rail Mounted

Option C
Font: 12" Arial Bold

Illuminated

Please advise on Finish Color

DESIGN PROPOSAL

Item: I.1 Address Number + Property Name Signs

Quantity: 1

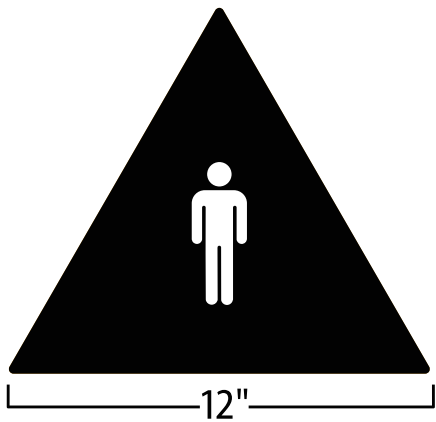
Size: As indicated

Material: TBD

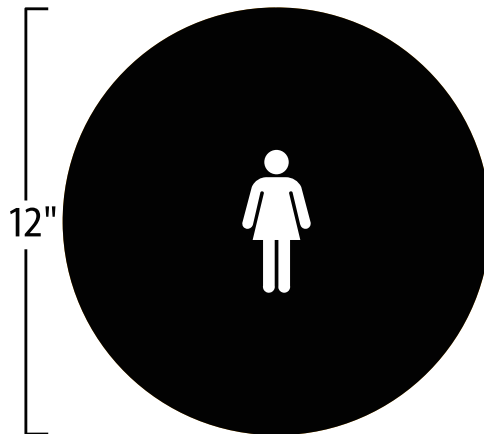
This is your proof indicating design, size and placement (if applicable). Actual color will be from your selection, as appearance on this proof may vary.

Please review carefully for accuracy and return with your signed approval or indicated changes. Revisions made after this signed approval may result in additional costs.

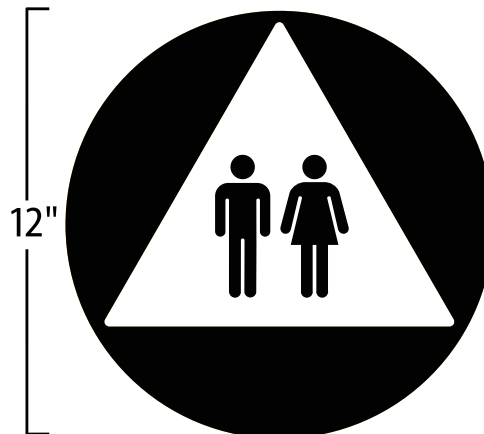
Production will not begin without your signed approval.



Door sign



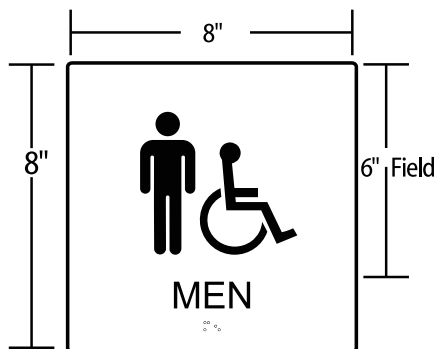
Door sign



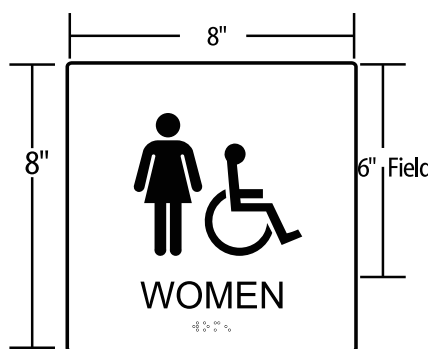
Door sign

All door-mounted signs in contrasting color to door 1/4" thick*

Please indicate paint color of door: _____



Wall sign



Wall sign



Wall sign

As of March 1, 2017 CA. Law, all single-user restrooms need to be gender-neutral.

| SCHEDULE | M | W | Unisex | M (ADA) | W (ADA) | Unisex (ADA) |
|----------------|---|---|--------|---------|---------|--------------|
| Community Room | | | | | | 2 |

Phone: 562.803.1988

Fax: 562.803.5298

LASignsbanners.com

11902 Woodruff Ave.
 Downey, Ca 90241

LIC. # 930147

DESIGN PROPOSAL

Item: L.1. Restroom Signs
 Quantity: See above
 Size: See above
 Font: As determined on Page 1.0
 Installation: Double sided foam tape
 and contractors silicone

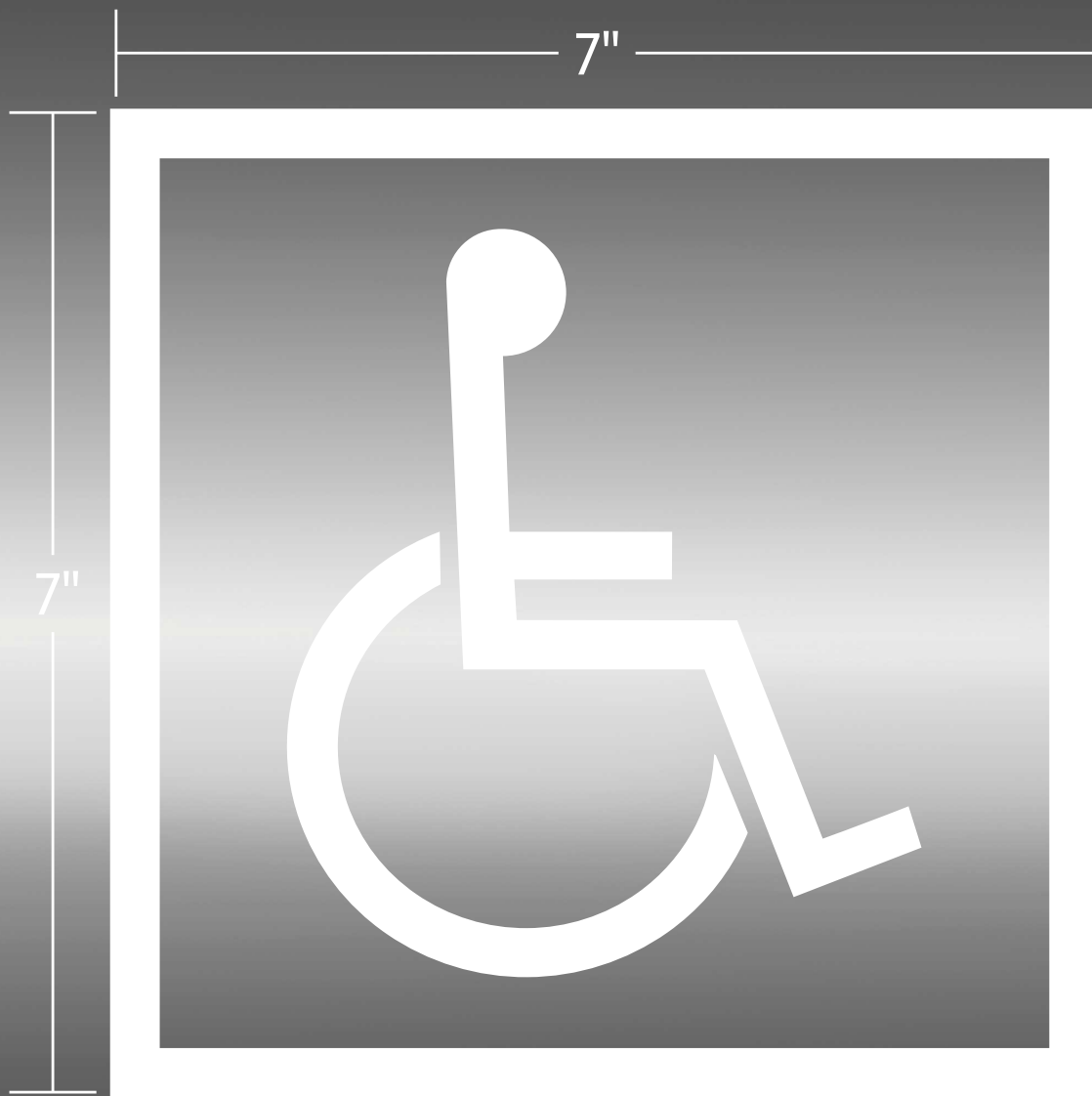
MATERIAL/COLOR

Base: ADA substrate, beveled edges
 Graphics: ADA applique
 Finish: Non-glare matte
 Braille: Clear CA ADA compliant beads
 Other: Color selection on page 1.0

This is your proof indicating design, size and placement (if applicable). Actual color will be from your selection, as appearance on this proof may vary.

Please review carefully for accuracy and return with your signed approval or indicated changes. Revisions made after this signed approval may result in additional costs.

Production will not begin without your signed approval.



Phone: 562.803.1988

Fax: 562.803.5298

LASignsbanners.com

11902 Woodruff Ave.
Downey, Ca 90241

LIC. # 930147

| DESIGN PROPOSAL | MATERIAL/COLOR | <p>This is your proof indicating design, size and placement (if applicable). Actual color will be from your selection, as appearance on this proof may vary.</p> <p>Please review carefully for accuracy and return with your signed approval or indicated changes. Revisions made after this signed approval may result in additional costs.</p> <p><i>Production will not begin without your signed approval.</i></p> |
|---|--|--|
| <p>Item: L.2. Handicap access decal</p> <p>Quantity: 1</p> <p>Size: See above</p> <p>Font: n/a</p> <p>Installation: Self adhesive</p> | <p>Material: Adhesive vinyl</p> <p>Graphics: White</p> <p>Other:</p> | |

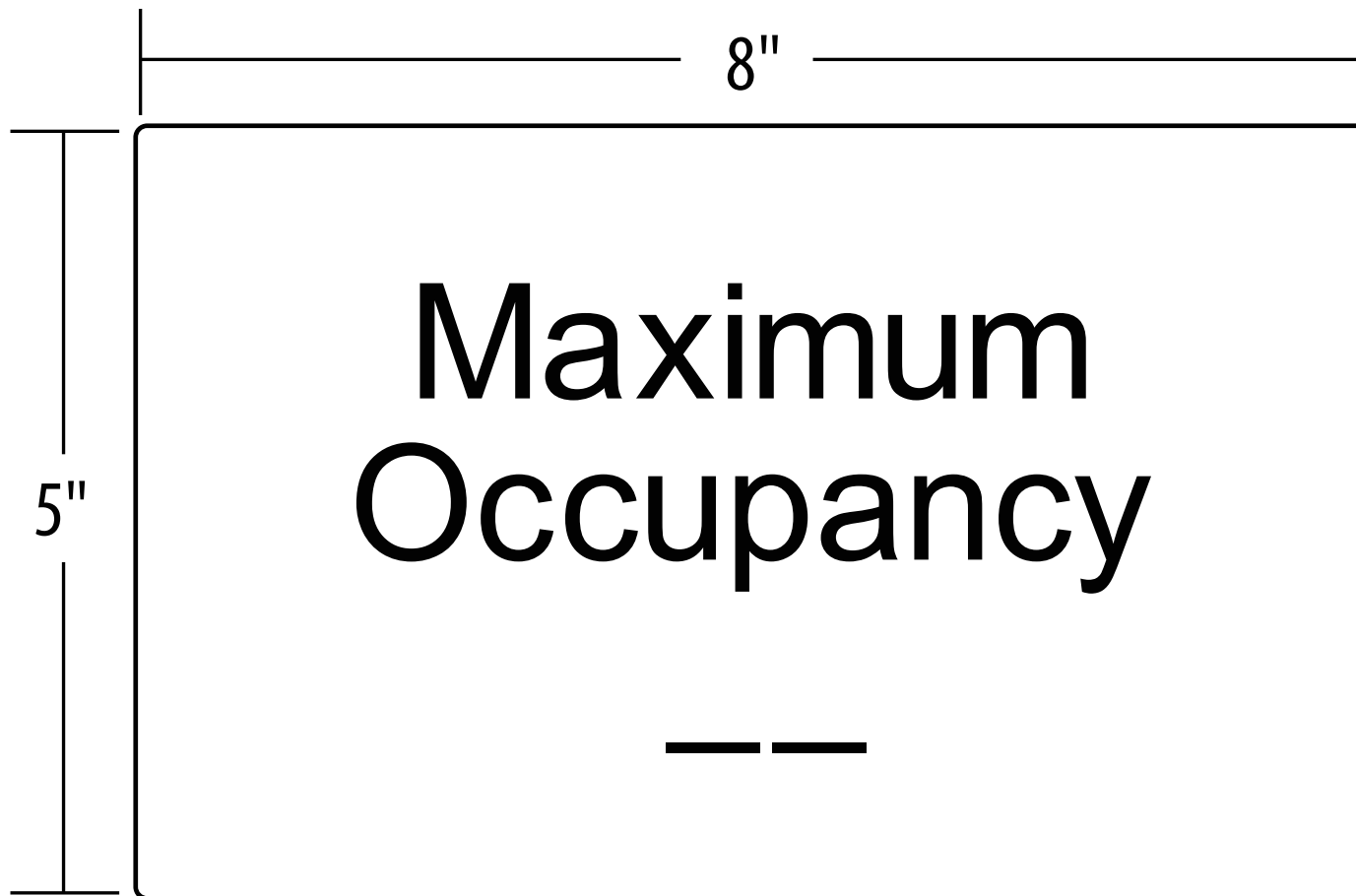
Phone: 562.803.1988

Fax: 562.803.5298

LASignsbanners.com

11902 Woodruff Ave.
Downey, Ca 90241

L.I.C. # 930147



0.75" letter height

Break Room: _____

Fitness: _____

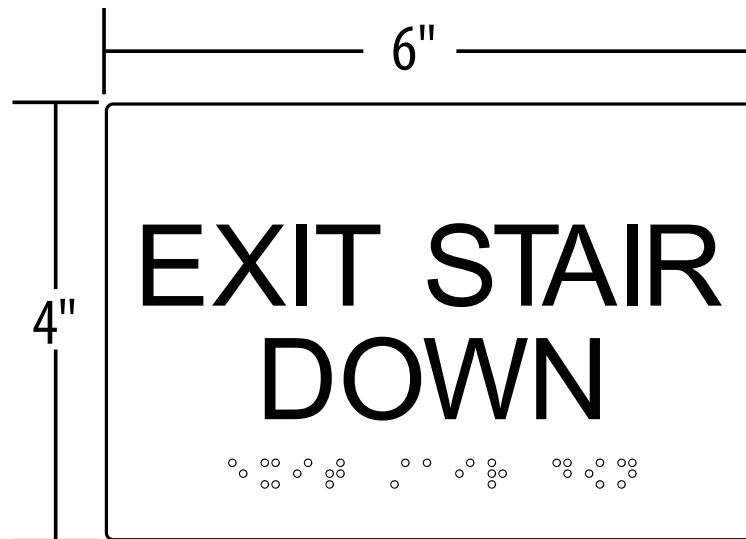
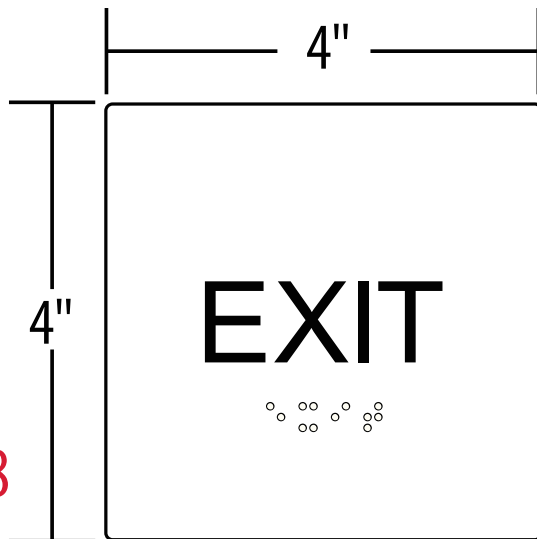
Please indicate maximum occupancy per room.

| DESIGN PROPOSAL | MATERIAL/COLOR | |
|--|--|---|
| <p>Item: L.3 Max. Occupancy signs Quantity: See above Size: See above; .06" rad. corners Font: As determined on Page 1.0 Installation: Double sided foam tape and contractors silicone</p> | <p>Base: ADA substrate, beveled edges Graphics: ADA applique Braille: none Other: Color as determined on Page 1.0</p> | <p>This is your proof indicating design, size and placement (if applicable). Actual color will be from your selection, as appearance on this proof may vary.</p> <p>Please review carefully for accuracy and return with your signed approval or indicated changes. Revisions made after this signed approval may result in additional costs.</p> <p><i>Production will not begin without your signed approval.</i></p> <p style="text-align: right;">Page 11.0</p> |

LA Signs & Banners will walk property and verify count accuracy.

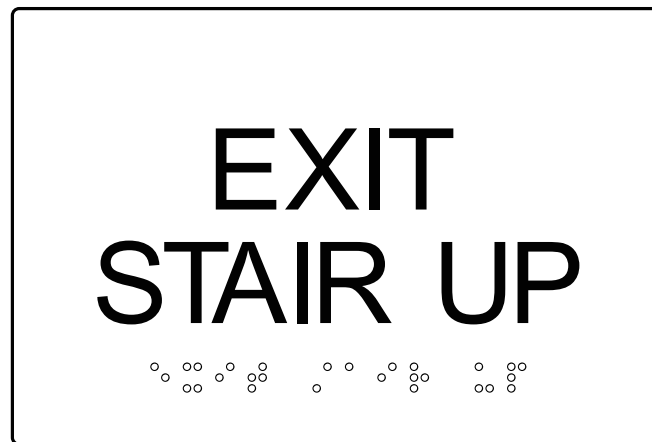
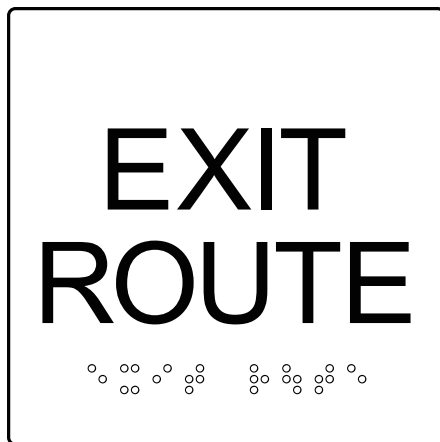


Phone: 562.803.1988
 Fax: 562.803.5298
 LASignsbanners.com
 11902 Woodruff Ave.
 Downey, Ca 90241
 LIC. # 930147



Qty = 8

Qty = 15



Qty = 30

Qty = 0

.75" letter height

| DESIGN PROPOSAL | MATERIAL/COLOR | |
|--|--|--|
| Item: X Exit signs Quantity: See schedule Size: See above, .06" rad. corners Font: As determined on Page 1.0 Installation: Double sided foam tape and contractors silicone | Base: ADA substrate Tactile: ADA applique Braille: Clear, CA ADA compliant beads Color: As determined on Page 1.0 | This is your proof indicating design, size and placement (if applicable). Actual color will be from your selection, as appearance on this proof may vary. Please review carefully for accuracy and return with your signed approval or indicated changes. Revisions made after this signed approval may result in additional costs. Production will not begin without your signed approval. |